

Instructions by CusCus Software® March 2007 V1.0.0

Installing Required Components

Warning: These instructions are given free and without any guarantee that they are correct or current, and should be used as a guide only. They refer to information that may change without our notice. New versions may appear different and may behave differently than intended. These software components belong to Microsoft and you use them as per their terms of conditions.

Please note: These files are quite large and may take some time to download, especially on slow connections. Please be aware of this to avoid frustration. To download these files as quick as possible we recommend stopping all other internet work, for example, downloading and sending emails, looking at other web pages etc. You may use your computer for other work, for example: reading already downloaded emails, using Microsoft Word, etc. This type of work/activity will not impede most current computer's ability to download files.

I use what I like to call '**quick jump links**'. They are not the usual links you would use to get to the required page, but are links that may have options attached.

When dealing with the dialogue download boxes, I always click on the 'save' option instead of 'run'. There are several reasons for this:

- the run option downloads the file then automatically runs it. If there is a problem when you run the file you may have to go through the whole process of downloading it again
- files that are large to download, or files where I may forget where (which web page) they came from
- once a file is downloaded I can run it when I like and as many times as I like
- always remember where you download a file to
- I always save utility software that I need for my computer to run properly to CD. If you have a problem in the future that requires a rebuild of Windows on your computer, you will not have to download the utilities again.

These instructions will aid in loading the required components from Microsoft's web site.

Microsoft product screen shots reprinted with permission from Microsoft Corporation.

Contents

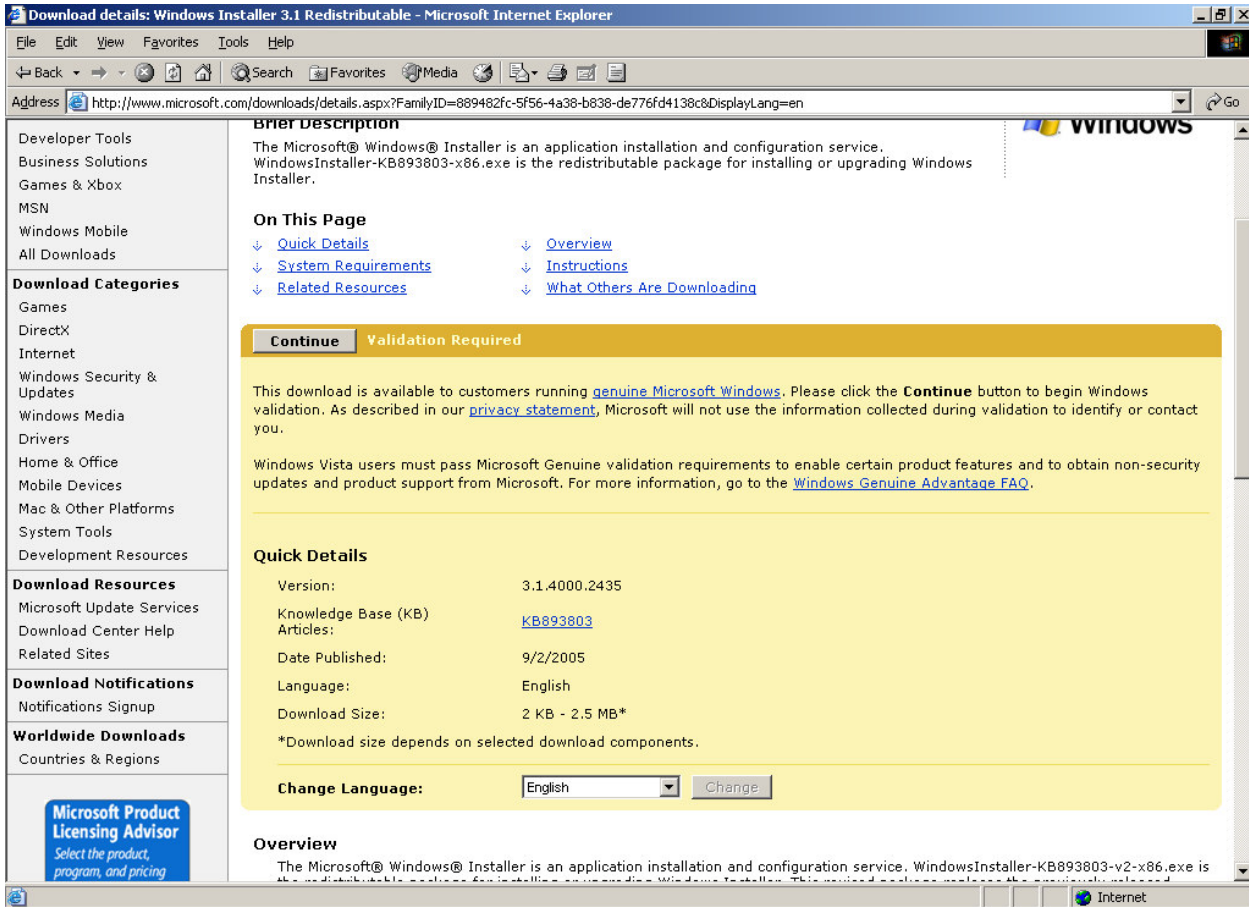
1. Microsoft Windows Installer 3.1	2
2. Microsoft's .NET Framework (version 2)	3
3. Microsoft's SQL 2005 express	4
4. Error messages	6
5. Installing SQL	7

1. Microsoft Windows Installer 3.1

Quick jump link to Microsoft's Installer 3.1 (This file is approximately 2.5 Mb)

<http://www.microsoft.com/downloads/details.aspx?FamilyID=889482fc-5f56-4a38-b838-de776fd4138c&DisplayLang=en>

This requires a validation of your Windows platform, which the web page will automatically do for you.



Click on the **Continue** button on the Validation Required form.

You will be taken to another information screen where a security warning dialogue box may appear, if this is the case then click **Yes**, which allows Microsoft's web page to check your Windows' version. If there are no problems you will receive a message indicating **genuine Microsoft software**.

Look at the bottom of the page for a heading called 'files in this download'; you only require the **WindowsInstaller-KB893803-v2-x86.exe** file (the middle letters and numbers may change as they are dependant on your processor).

Click on the **Download** button, which should supply you with a download dialogue box. I usually click the **Save** button (and don't forget where you save it).

After it finishes downloading (saving) the file to your computer, double click on the downloaded file to install it on your system.

2. Microsoft's .NET Framework (version 2)

Quick jump link to Microsoft's .NET Framework v2 (This file is approximately 23 Mb)
<http://msdn2.microsoft.com/en-us/netframework/aa731542.aspx>

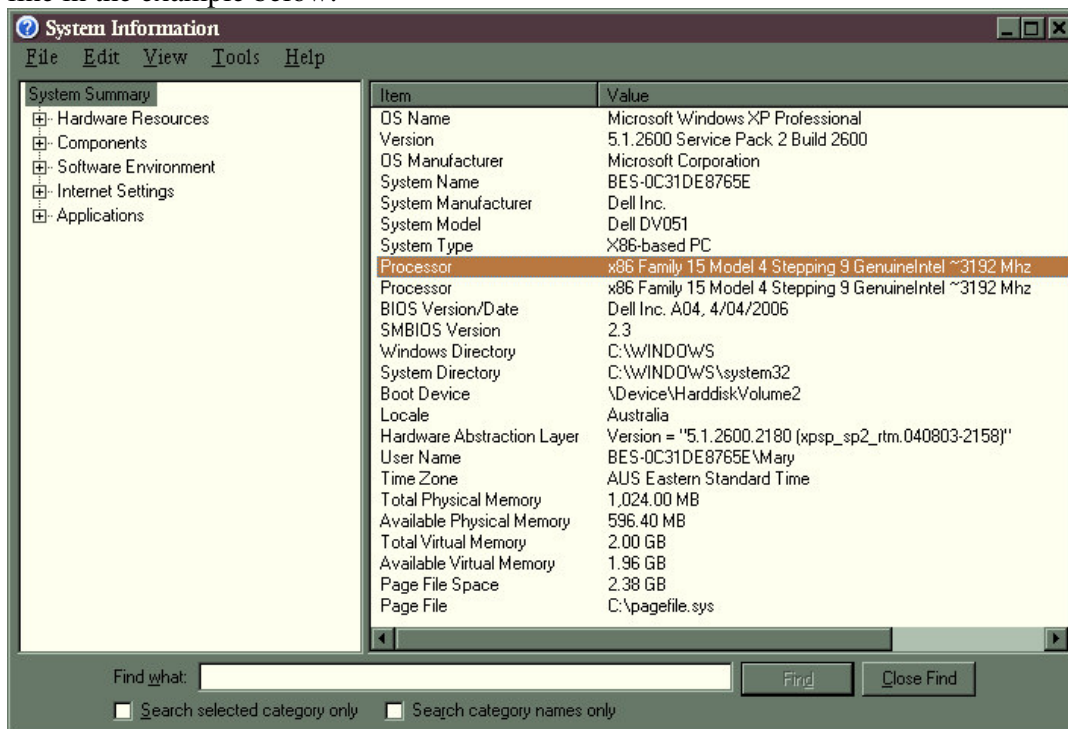
Under the **.NET Framework version 2.0 redistributable package** heading, there are three options:

- download x86 version
- download x64 version
- download IA64 version.

The .NET framework is processor dependent; therefore click on the correct version for your computer, which can be easily found in the following way:

- click on the **Start** button situated on the bottom left-hand corner of your display screen
- then move the mouse pointer to **All Programs** where a list of programs will appear
- move the mouse pointer to **Accessories**, which produces a list of utility programs
- then move the mouse pointer to **System Tools**, and finally click on **System Information**.

The **System Information** screen will open showing the processor type as indicated in the highlighted line in the example below:



After noting the 'Processor type', close this screen (that's all we need from it).

Return to the web page and click on the download version suitable for your computer. This will take you to another web page where you can download the file.

Click on the **Download** button, which should give you a download dialogue box.

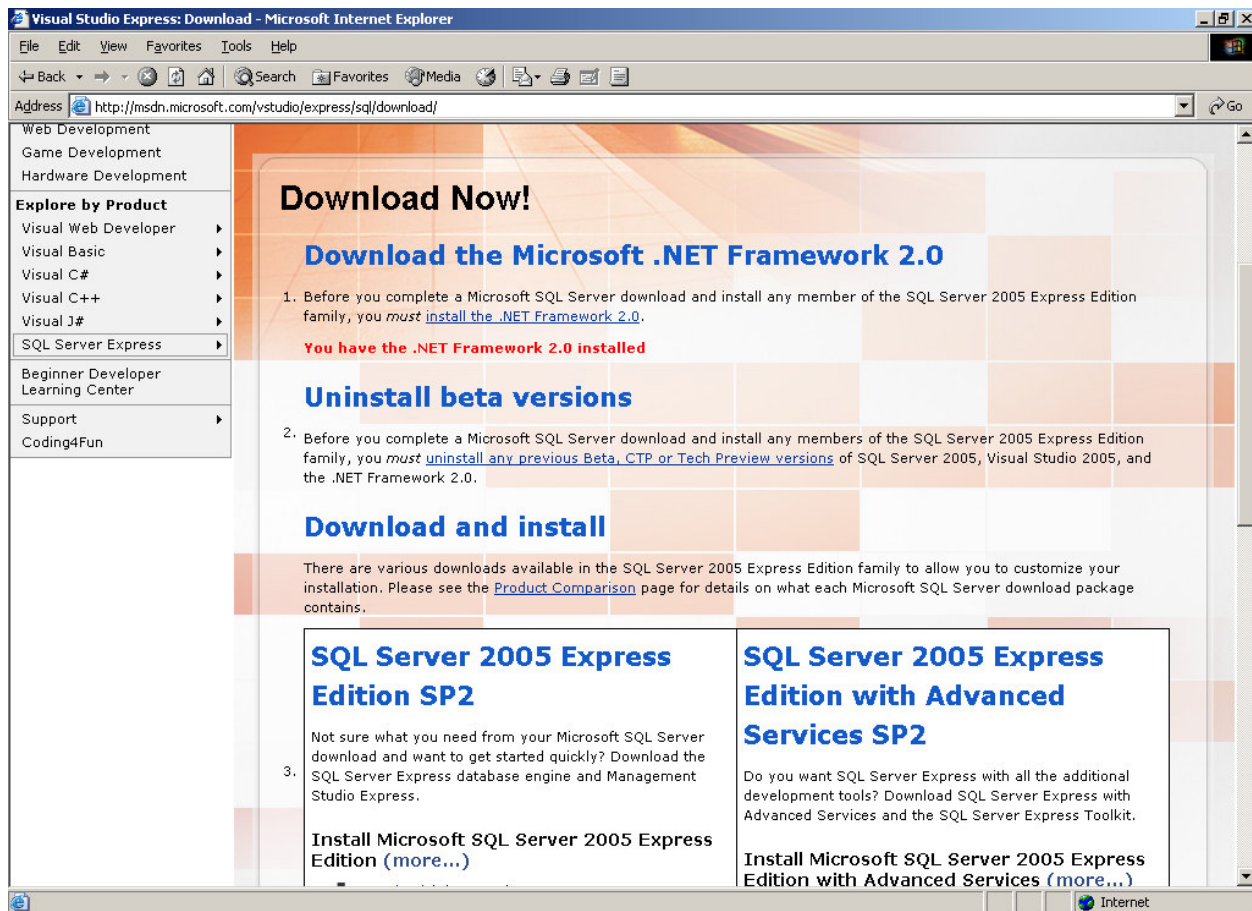
I usually click the **Save** button (and remember where you save it to).

After it finishes downloading (saving) the file to your computer, double click on the file downloaded to install it on your system.

3. Microsoft's SQL 2005 express

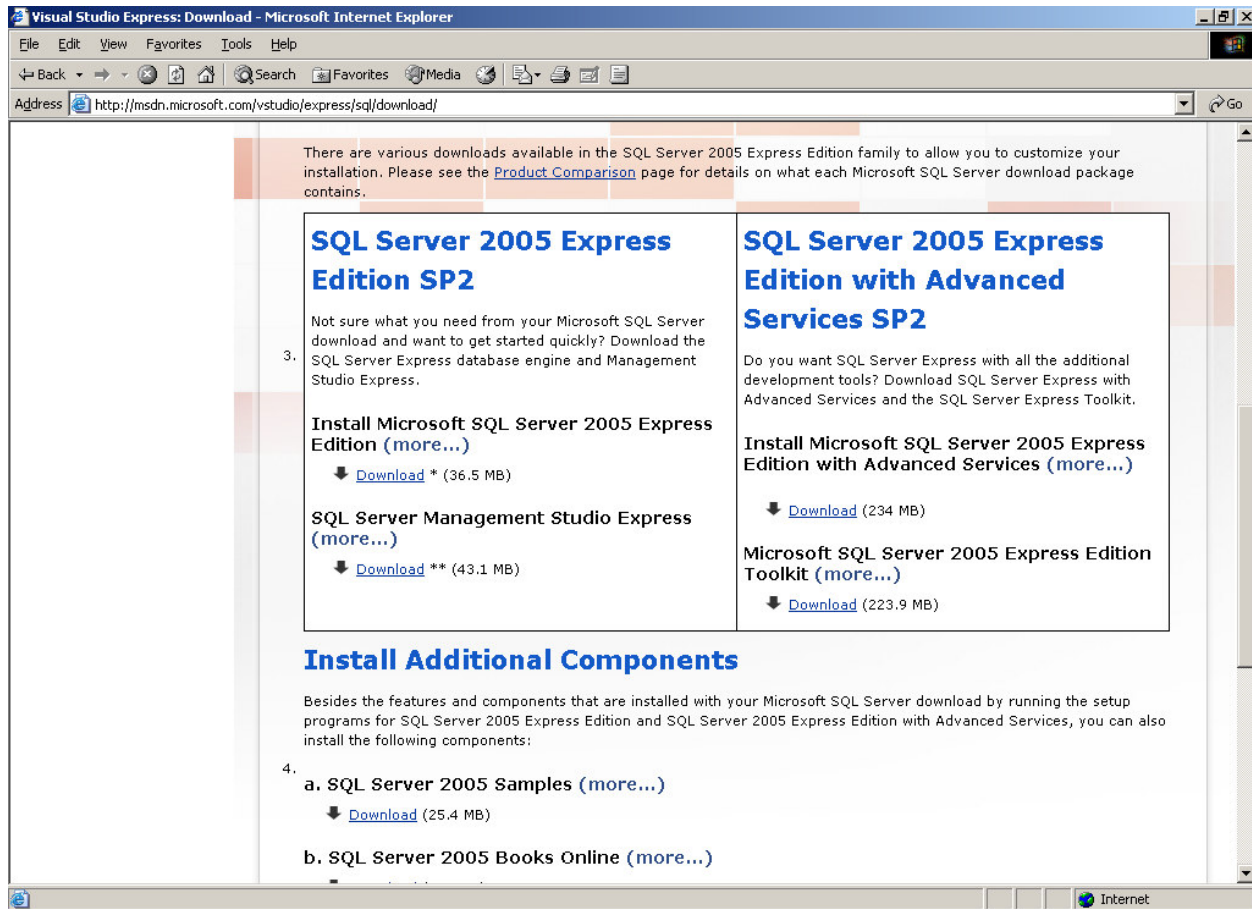
Quick jump link to Microsoft's SQL .NET Framework 2.0 (this file is large, approximately 36 Mb)
<http://msdn.microsoft.com/vstudio/express/sql/download/>

The top of the web page (as in our example) refers to downloading .NET Framework 2.0, which we did in the previous section. If you have already installed the .NET Framework 2.0 then the web page will indicate this. If you haven't installed it, you can do so after you download the SQL install software.



Only the **SQL server 2005 Express Edition SP2** is required.

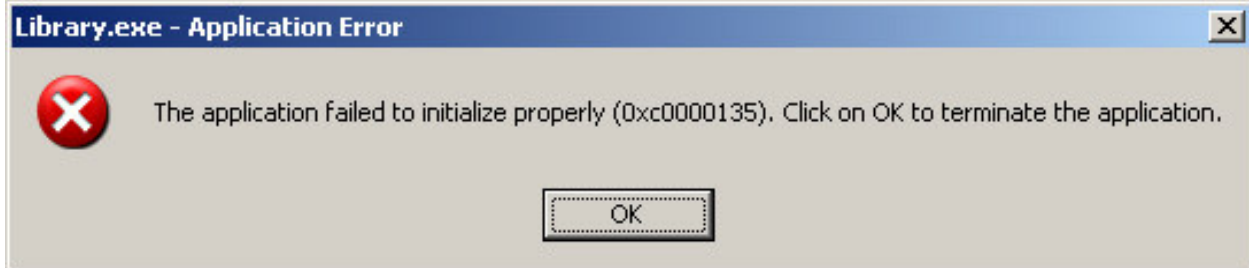
Click on [Install Microsoft SQL server 2005 Express Edition](#) download link, which should produce a download dialogue box. I usually click the [Save](#) button, and don't forget where you saved it. After the file is downloaded (saved) to your computer, double click on the downloaded file to install it on your system.



4. Error messages

Please refer to these error messages that you may receive if the required software components are not installed.

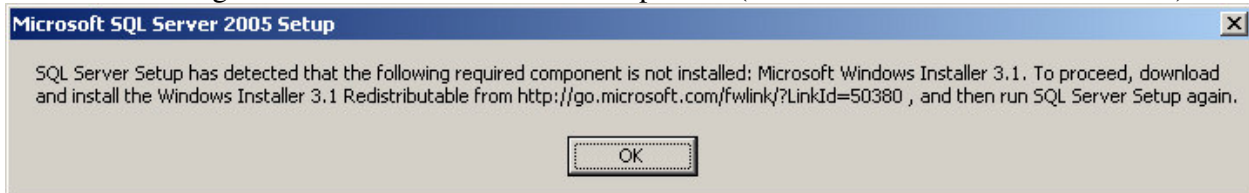
This error message indicates the .NET environment is not loaded (see section 2 for more information):



This error message specifies SQL is not installed (see section 3 for more information).



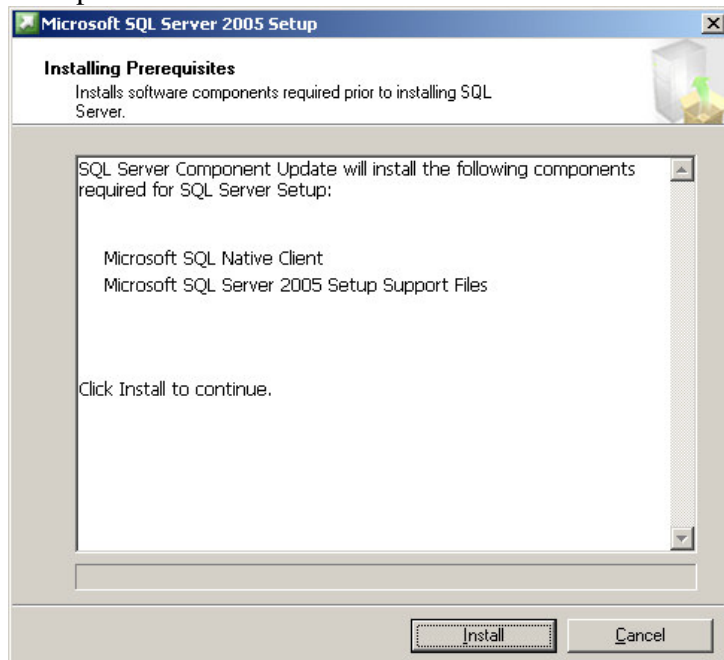
This error message informs that the Installer is not present (see section 1 for more information).



5. Installing SQL

The SQL is a little more involved to install than the .NET and the Installer modules, but these guidelines should help you through. We recommend loading SQL using all the default settings as CusCus Software's programs connect to SQLEXPRESS (a default setting).

When you first run the SQL loader program it loads a couple of pre-install modules as shown in the example below:

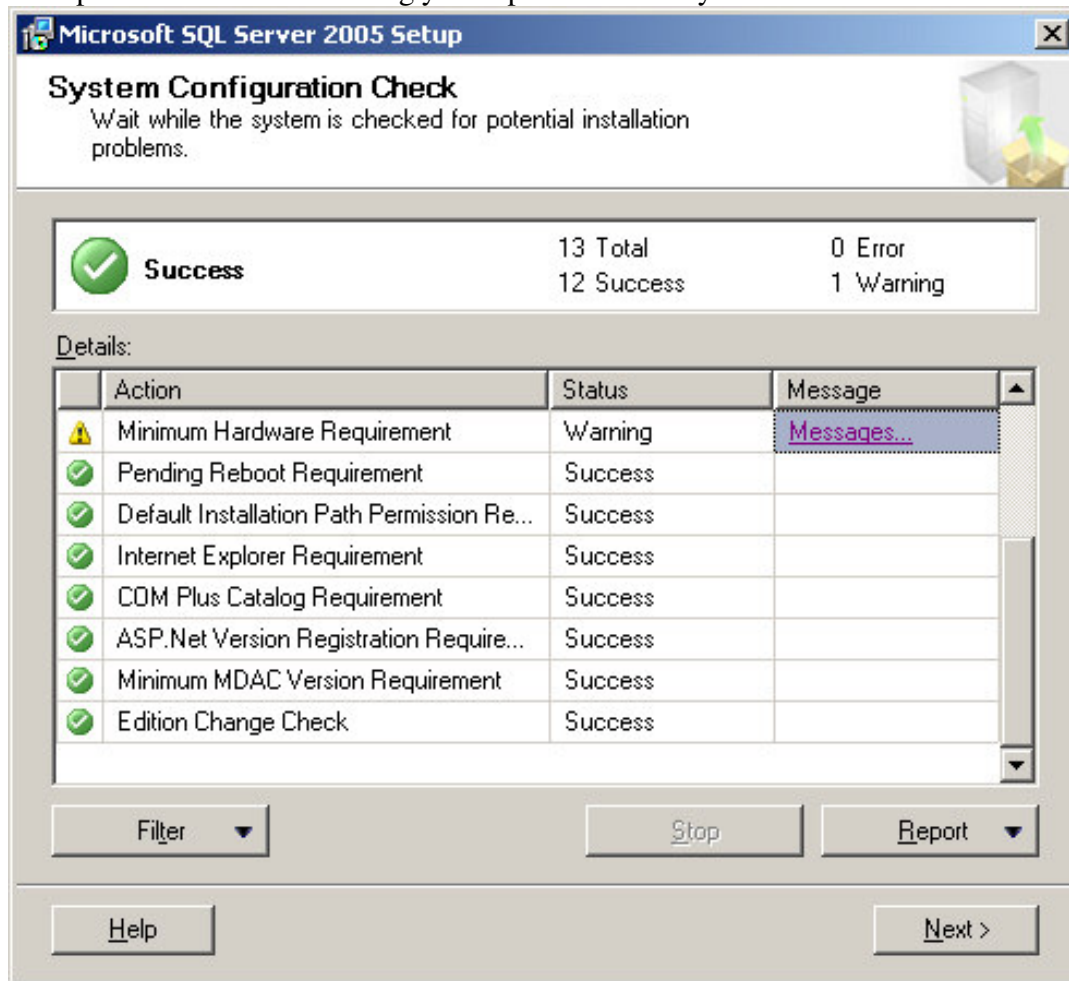


Click on the **Install** button, which will initiate the installation wizard.

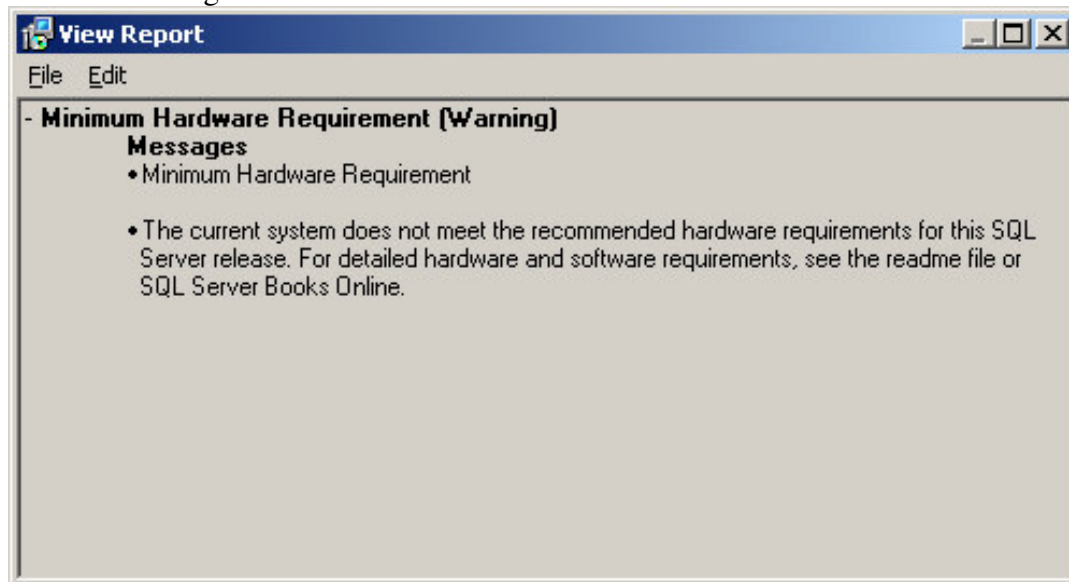
Press the **Next** button to continue with the installation.



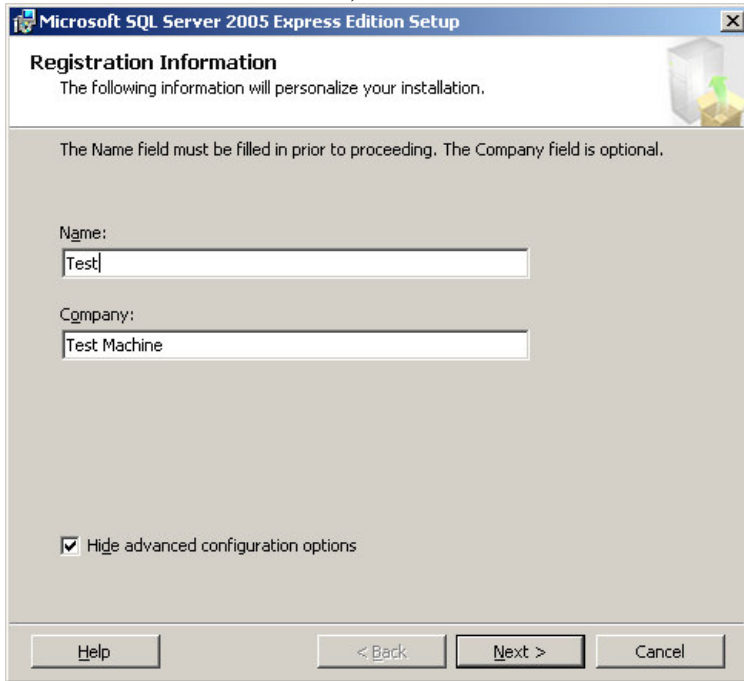
A system check is performed on your system. Don't be overly concerned about some warnings; the example below shows a warning yet it operates correctly:



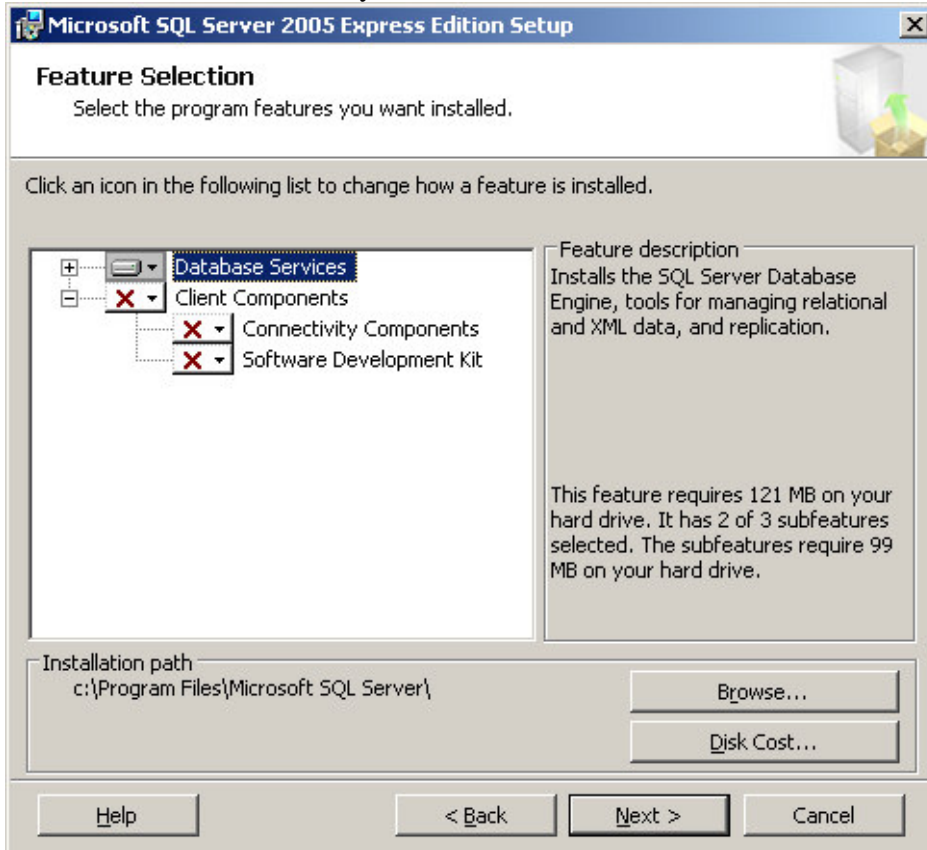
If you're concerned about a warning then click on the message to read the information, although this additional dialogue is limited.



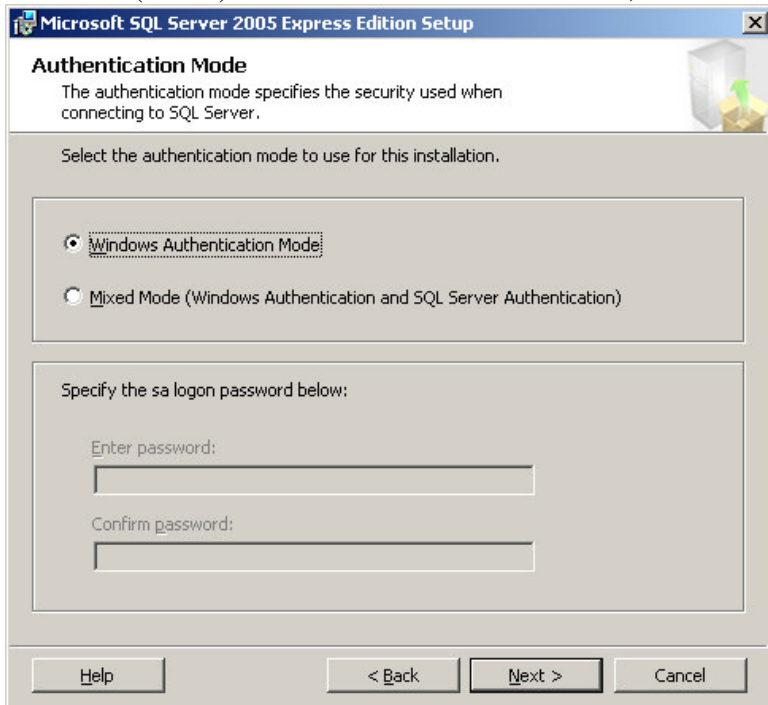
After clicking the **Next** button in the **System Configuration Check** dialogue box, the registration screen is displayed. As you can see, I checked (ticked) the **Hide advanced configuration options** (let the software choose its defaults).



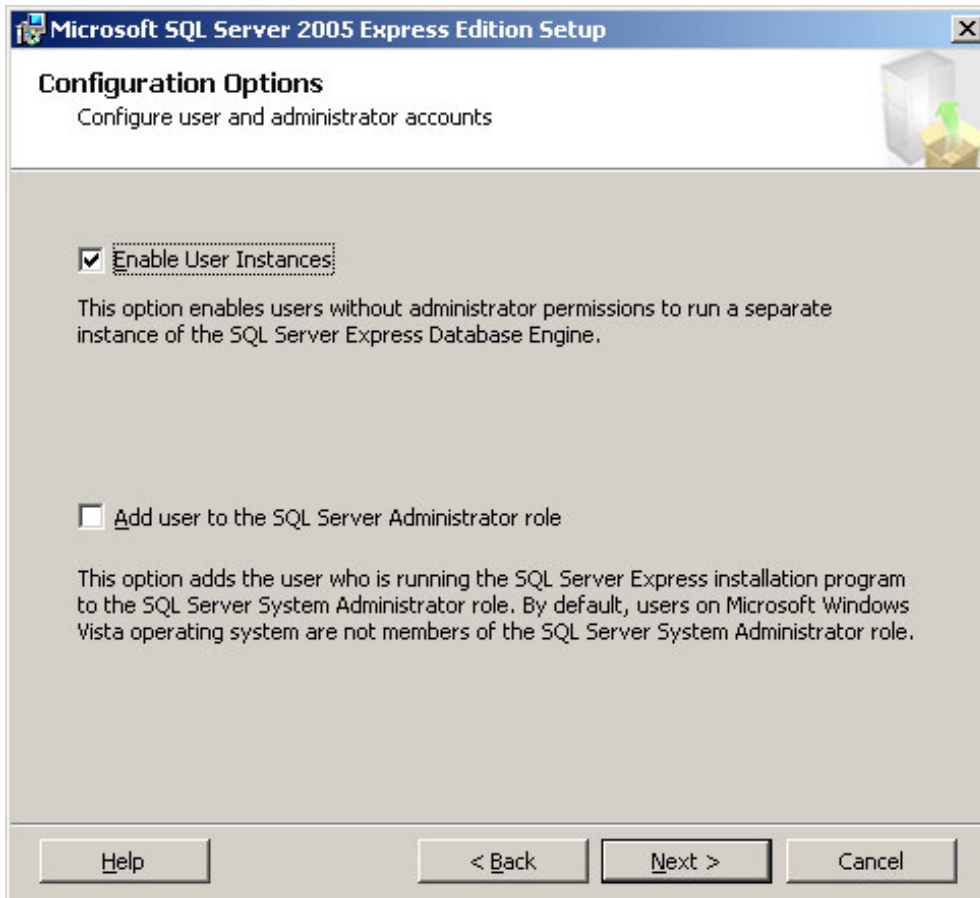
The general SQL express version doesn't have a lot of features so there isn't anything to change; click on the **Next** button. Note: If you download a different version then this may appear differently.



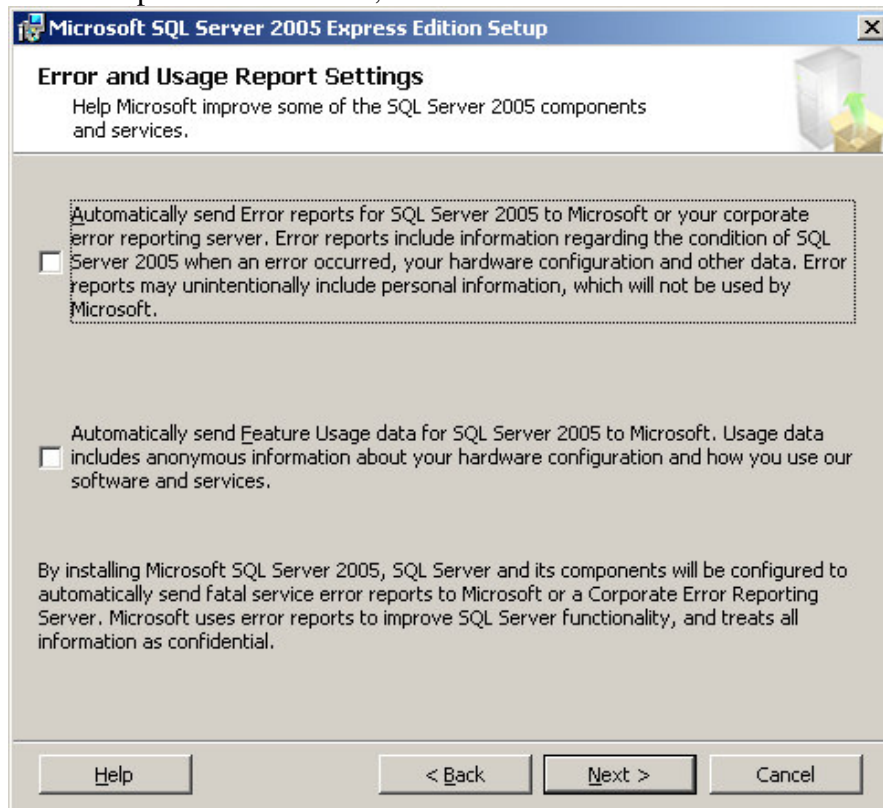
I checked (ticked) **Windows Authentication Mode**, and then clicked on **Next** button.



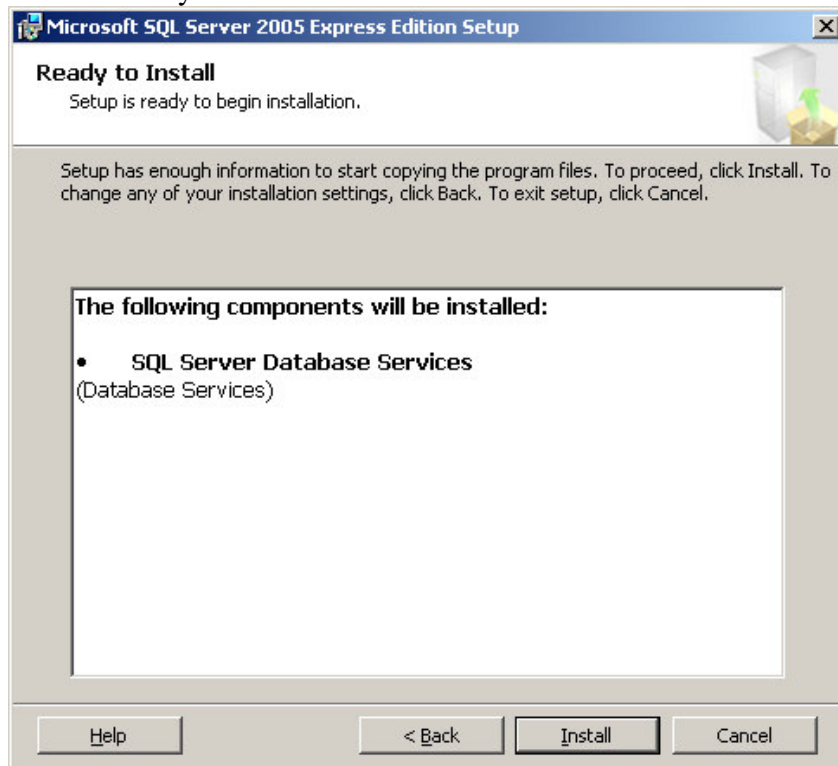
Select the default settings by checking (ticking) **Enable User Instances**. Then click on the **Next** button.



I left the options below blank, and clicked on the **Next** button:



Now it's ready to install. Click on the **Install** button.



And that's it!